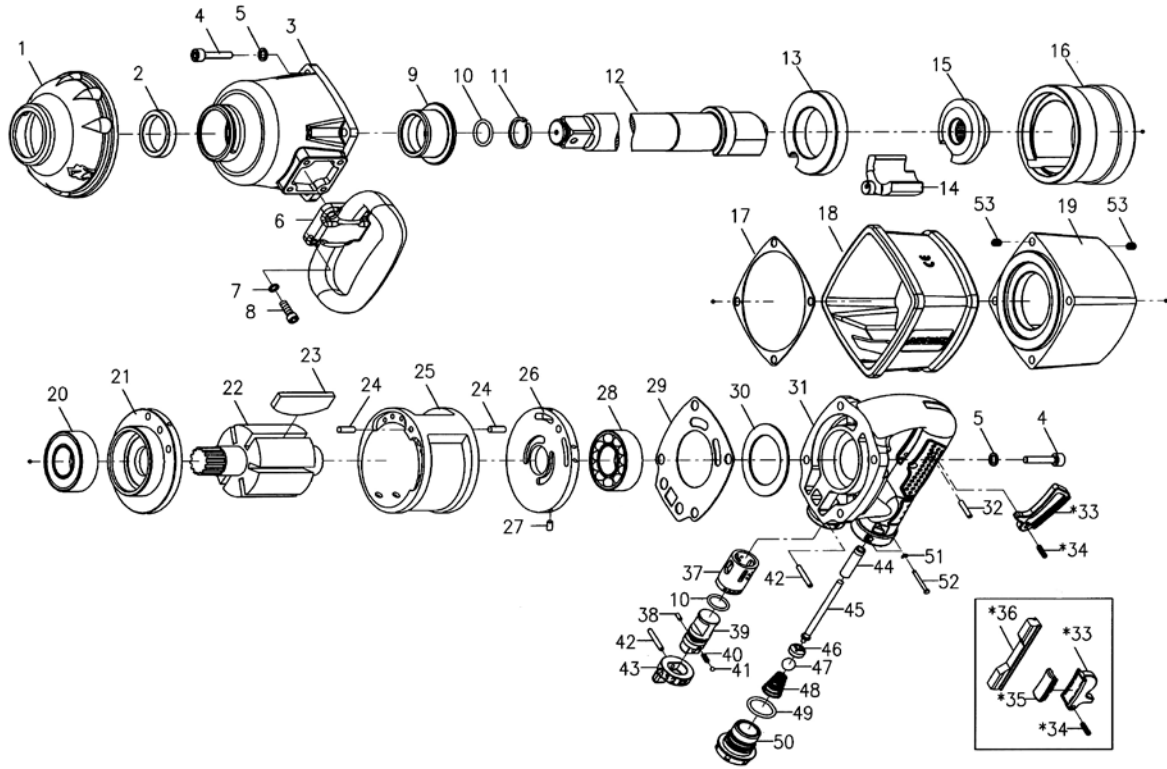


# 1900-A

## 1" PROFESSIONAL AIR IMPACT WRENCH



Index No.	Part No.	Description	Q'ty	F.O.B Unit Price USD	Index No.	Part No.	Description	Q'ty	F.O.B Unit Price USD
1	315PH-040	Hammer Case Rubber	1	2	29	315PX-032	Rear Gasket	1	2.2
2	00-4229	Oil Seal	1	0.8	30	550-042	Gasket	1	0.3
3	315PH-002	Hammer Case	1	15.8	31	315PH-004	Handle Frame	1	26.8
4	00-0108	Cap Screw	8	0.3	32	00-3305	Spring Pin	1	0.2
5	00-1804	Spring Washer	8	0.2	*33	315S-024	Inner Trigger	1	0.7
6	315F-020	D-Type Handle	1	8.8	*34	00-3320	Spring Pin	1	0.2
7	00-1803	Spring Washer	4	0.2	*35	315S-025	Trigger Rubber	1	1
8	00-0119	Cap Screw	4	0.2	*36	315F-039	Rubber Protector	1	0.5
9	315PH-010	Anvil Bushing	1	6.1	*33	315S-023	Outer Trigger	1	0.7
10	00-4124	O-Ring	2	0.2	*34	00-3320	Spring Pin	1	0.2
11	310-038	Anvil Collar	1	0.2	37	328-020	Reverse Valve Bushing	1	6.9
12	315PH-011A8	Anvil	1	64.7	38	00-3307	Spring Pin	1	0.2
	315PH-011B8	8" Anvil		111	39	315S-021	Reverse Valve	1	5.8
13	315PH-019	Hammer Cage Cover	1	11	40	322-023-B	Spring	1	0.2
14	315PH-015	Hammer Dog	1	16.3	41	00-3802	Steel Ball	1	0.2
15	315PH-013	Cam	1	11.6	42	00-3338	Spring Pin	2	0.2
16	315PH-012	Hammer Cage	1	49.9	43	315S-022	Reverse Knob	1	0.9
17	315PH-030	Front Gasket	1	2.1	44	315S-026	Valve Bushing	1	1.5
18	315PH-043	Housing Band	1	3.9	45	315S-027	Valve Stem (Inner)	1	1.5
19	315PH-001	Motor Housing	1	22.5	46	568-026	Bushing	1	2.3
20	00-2301	Ball Bearing	1	4.8	47	00-3809	Steel Ball	1	0.5
21	315-005C	Front End Plate	1	15.2	48	315S-029	Spring	1	0.3
22	315-007	Rotor	1	24.7	49	00-4188	O-Ring	1	0.2
23	328-008	Rotor Blade	6	1.3		315F-025A	Air Inlet (1/2"PF)		
24	00-3311	Spring Pin	2	0.2	50	315F-025B	Air Inlet (1/2"PT)	1	5.2
25	315PX-006	Cylinder	1	16.9		315F-025C	Air Inlet (1/2"NPT)		
26	315-009C	Rear End Plate	1	16	51	00-3207	Snap Ring	2	0.2
27	00-3314	Spring Pin	1	0.2	52	315S-034	Pin	2	0.7
28	00-2319	Ball Bearing	1	3.2	53	00-4303	Incerts Recoil	8	0.3